

WALTON HOUSE

RESIDENCES

BY

M|DESIGN
LONDON

WALTON HOUSE

RESIDENCES

[THE APARTMENTS](#)

[FLOOR PLANS](#)

[SPECIFICATION](#)

[LOCATION](#)

[MDESIGN LONDON](#)

[CONTACT](#)





Located in the heart of Knightsbridge, Walton House Residences offers a stunning collection of apartments expertly created by the award-winning interior designers at Mdesign London.

This exclusive development provides a opportunity to reside at one of London's most prestigious addresses, in a unique property that blends historical elegance with contemporary luxury living.

THE APARTMENTS

THE GRAND APARTMENT

6,728 SQ. FT.

625.1 SQ. M.

One of London's most spectacular apartments.

Showcasing exquisite craftsmanship, bespoke finishes, and the seamless integration of modern amenities, this triplex apartment defines luxury living in London's most coveted neighbourhood.

With a private ground floor lobby and its own exclusive 6-person lift, the property features stunning architecture, an ambassadorial reception room with a ceiling height in excess of 4m, four elegant bedroom suites, and a beautiful rooftop terrace. The exclusive leisure floor includes a 13-metre swimming pool, cinema room and bar-lounge area.



ENTRANCE HALL
Ground Floor



RECEPTION & DINING ROOM
First Floor





POWDER ROOM
First Floor



KITCHEN
First Floor



KITCHEN
First Floor



ROOF TERRACE
Third Floor



PRINCIPAL BEDROOM SUITE
Third Floor



PRINCIPAL BEDROOM SUITE
Third Floor







PRINCIPAL ENSUITE
Third Floor



SECOND BEDROOM SUITE
Second Floor





SECOND BEDROOM ENSUITE
Second Floor



THIRD BEDROOM SUITE
Second Floor



THIRD BEDROOM ENSUITE
Second Floor



PRIVATE SWIMMING POOL AND JACUZZI
Leisure Floor



BAR LOUNGE
Leisure Floor



CINEMA
Leisure Floor

APARTMENT 2

2,644 SQ. FT.

245.6 SQ. M.

This exquisitely designed duplex apartment benefits from a private entrance on Pont Street and offers beautifully proportioned spaces, including three en-suite bedrooms and a magnificent reception-dining room with a ceiling height in excess of 3.2m.



RECEPTION & DINING ROOM
Ground Floor



RECEPTION & DINING ROOM
Ground Floor





KITCHEN
Ground Floor



PRINCIPAL BEDROOM SUITE
Lower Ground Floor



PRINCIPAL BEDROOM SUITE
Lower Ground Floor





PRINCIPAL ENSUITE
Lower Ground Floor



SECOND BEDROOM SUITE
Lower Ground Floor



THIRD BEDROOM SUITE
Lower Ground Floor

APARTMENT 3

976 SQ. FT.
90.7 SQ. M.

APARTMENT 4

942 SQ.FT.
87.5 SQ. M.

Details on application.

FLOOR PLANS

THE GRAND APARTMENT

FLOOR PLANS



WALTON STREET ELEVATION



GROUND FLOOR

- 1 Entrance, Walton Street
- 2 Private entrance lobby
- 3 Private lift



FIRST FLOOR

- 4 Kitchen
- 5 Powder room
- 6 Reception
- 7 Dining
- 8 Balcony
- 9 Private lift
- 10 Roof terrace
- 11 Flat roof

6,728 SQ. FT.

625.1 SQ. M.

THE GRAND APARTMENT

FLOOR PLANS



WALTON STREET ELEVATION

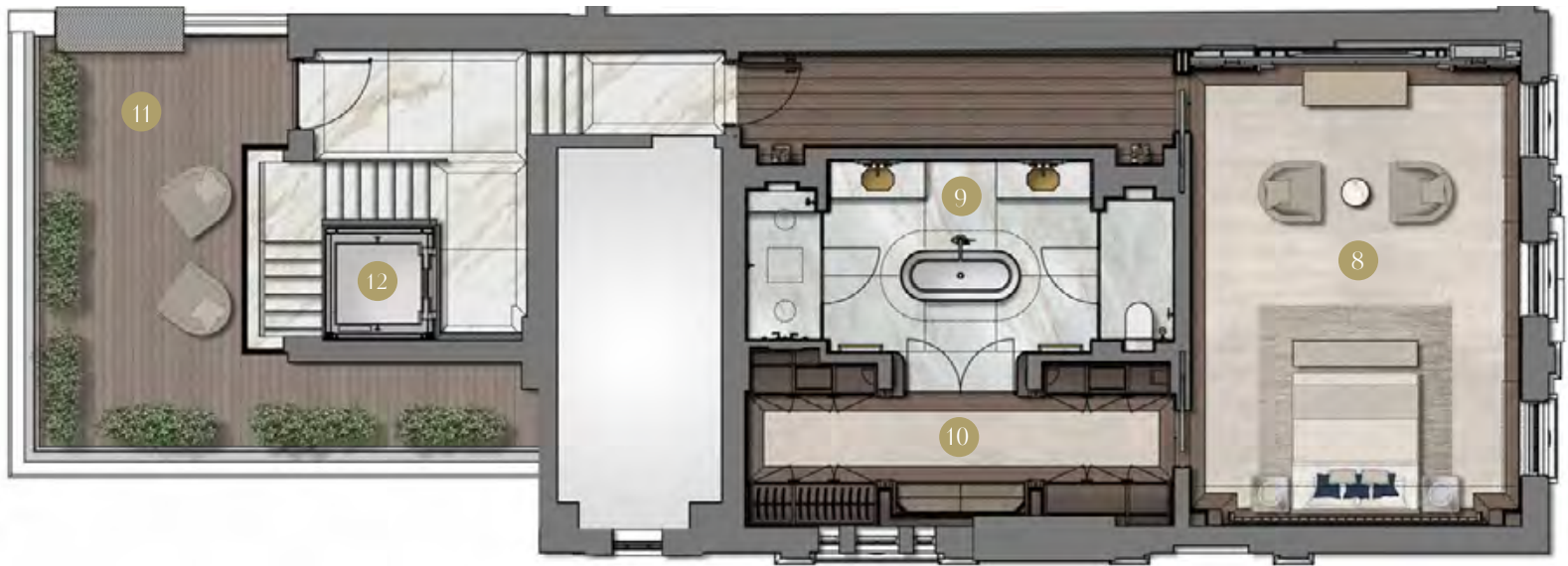
6,728 SQ. FT.

625.1 SQ. M.



SECOND FLOOR

- 1 Bedroom 2
- 2 Ensuite 2
- 3 Bedroom 3
- 4 Ensuite 3
- 5 Bedroom 4
- 6 Ensuite 4
- 7 Private lift



THIRD FLOOR

- 8 Principal bedroom
- 9 Principal ensuite
- 10 Principal dressing room
- 11 Private terrace
- 12 Private lift

THE GRAND APARTMENT

FLOOR PLANS



WALTON STREET ELEVATION



LOWER GROUND FLOOR

- 1 Storage
- 2 Laundry room
- 3 Private lift



LEISURE FLOOR

- 4 Cinema room
- 5 Bar lounge
- 6 Powder room
- 7 Steam shower
- 8 Changing room and WC
- 9 Swimming pool
- 10 Poolside lounge area
- 11 Jacuzzi
- 12 Pool plant
- 13 Private lift
- 14 Plant room

6,728 SQ. FT.

625.1 SQ. M.

APARTMENT 2

FLOOR PLANS



WALTON STREET ELEVATION

GROUND FLOOR



- 1 Entrance, Pont Street
- 2 Principal bedroom
- 3 Principal dressing room
- 4 Principal ensuite bathroom
- 5 Kitchen
- 6 Reception / Dining
- 7 Cloakroom
- 8 Powder room

LOWER GROUND FLOOR



- 9 Bedroom 2
- 10 Dressing room 2
- 11 Ensuite 2
- 12 Ensuite 3
- 13 Bedroom 3
- 14 Laundry room

2,644 SQ. FT.

245.6 SQ. M.

APARTMENT 3

FLOOR PLANS



WALTON STREET ELEVATION



LOWER GROUND FLOOR
External area is not demised

- 1 Entrance, Pont Street
- 2 Principal bedroom
- 3 Principal ensuite
- 4 Bedroom 2
- 5 Bathroom
- 6 Kitchen / Dining / Reception

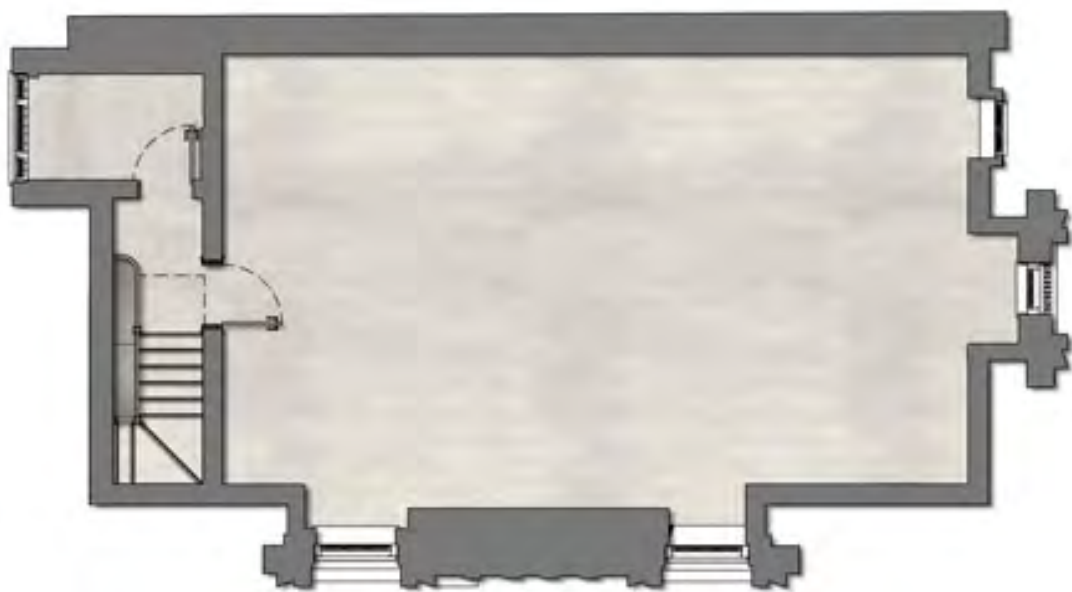
976 SQ. FT.
90.7 SQ. M.

APARTMENT 4

FLOOR PLANS



WALTON STREET ELEVATION



FOURTH FLOOR
White box



FOURTH FLOOR
Optional one bedroom
scheme by Mdesign

- 1 Bedroom
- 2 Ensuite
- 3 Kitchen / Dining / Reception
- 4 Powder room

942 SQ.FT.

87.5 SQ. M.

THE GRAND APARTMENT

APARTMENT SUMMARY

- Triplex apartment with additional leisure floor at basement level
- 4-bedroom suites
- Spectacular architecture
- Private entrance on Walton Street
- 6-person private passenger lift
- Exceptional proportions with ceiling heights of up to 4.2m

GROUND FLOOR

ENTRANCE HALL

- Custom-made front doors with secure entry system
- Impressive double height entrance hall, exclusive to the Grand Apartment
- Hand crafted pendant light in antique brass and rough-cut selenite
- Striking Volakas book matched slab marble with antique brass metal trim detailing
- Architectural arch with Volakas stone lining
- Bespoke joinery in Tabu Veneer units for convenient storage
- Specialist gold plaster finish to lift shaft
- Marmorino plaster finish to walls
- Bespoke doors in Tabu Veneer
- Electric blinds to windows for ease of control

STAIRCASE

- Volakas vein matched marble to stairs with Silver Emperador contrasting bottom steps
- Contemporary glass balustrade with antique brass handrail

FIRST FLOOR

STAIR HALL

- Gold marmorino plaster finish to lift shaft
- Specialist plater finish to walls by DKT Artworks
- Striking vein-matched Volakas marble to floor
- Contemporary glass balustrade with antique brass handrail
- Antique brass metal effect to lift doors and surround
- Bespoke doors in Tabu Veneer

RECEPTION ROOM

- Exceptional proportions including ceiling heights or circa 4.2m
- Brushed oak chevron floor with antique brass metal trims
- Decorative panel mouldings to walls
- Spectacular marble fireplace in Thassos Stone with gas fire
- Bespoke handmade wallpaper by Fabienne Fabre to recessed feature wall
- Custom-made joinery housing a 75” TV in dark stained oak veneer with bespoke handmade wallpapered feature panels and accents in bronze and brass
- Bespoke timber doors in Tabu Veneer
- Impressive 2-tiered grand chandelier featuring hand blown twisted smoked glass and silk lampshades

DINING AREA

- Panel mouldings to walls with inset feature wallpaper from Fameed Khaliq
- Brushed oak chevron floor
- Bespoke cabinetry with wallpaper and antique brass detailing

KITCHEN

- Volakas marble to floor
- Custom-made kitchen units by Doig in Tabu Lolo veneer and solid walnut internals with antique brass detailing and Volakas marble countertops & splash backs
- Bespoke pantry unit with contrasting Tabu veeners and volakas countertop & splashback
- State-of-the-art Gaggenau appliances, including oven, combi microwave oven, gas hob, fridge, freezer, extractor and dishwasher
- Quooker boiling water tap
- Bespoke 3m high steel glazed doors allowing natural light to the hallway
- Hand crafted chandelier with antique brass frame and carved alabaster bowls

POWDER ROOM

- Bespoke doors in Tabu veneer
- Decorative panel mouldings to walls
- Brushed Oak flooring with antique brass metal trims
- Bespoke vanity in Sodalite marble with matching niche details
- Sanitaryware by Toto and THG

TERRACE

- Fluted timber decking

JULIETTE BALCONIES

- Portland limestone to floor

SECOND FLOOR

STAIR HALL

- Gold marmorino plaster finish to lift shaft
- Specialist plater finish to walls by DKT Artworks
- Vein matched Volakas marble to floor
- Contemporary glass balustrade with antique brass handrail
- Antique brass metal effect to lift doors and surround
- Bespoke doors in Tabu veneers

BEDROOM 1

- Elegant tip shear carpet with brushed oak timber boarder and antique brass metal trims
- Wall covering in Omexco wallpaper
- Bespoke fitted wardrobes finished in a birch wood Mundy veneer offset by Lizzo inset wall coverings
- Bespoke doors with fluted detail & antique brass ironmongery

ENSUITE 1

- Thassos Stone porcelain to floors and walls
- Feature wall in Calacatta porcelain
- Vanity, niche and bath details in Caesar stone
- Sanitaryware by Toto and Gessi
- Bespoke doors with fluted detail & chrome ironmongery

BEDROOM 2

- Brushed oak timber floor with inset tip shear carpet and antique brass metal trims
- Omexco wallcoverings
- Bespoke wardrobe joinery in Caleidolegno Mundy Veneer
- Painted bespoke doors with fluted detail & antique brass ironmongery

ENSUITE 2

- Pietrasanta Porcelain to floors, walls and vanity unit
- Bespoke vanity and joinery units in Tabu Veneer
- Sanitaryware by Villeroy and Boch and Dornbracht
- Bespoke Crittall style shower screen & doors by Art Steel
- Bespoke doors with fluted detail & black bronze ironmongery

BEDROOM 3

- Elegant tip shear carpet with timber boarder and antique brass metal trims
- Custom-made wardrobes with Philip Jeffries inset wallpapered feature panels
- Bespoke doors in Tabu Veneers and antique brass ironmongery

ENSUITE 3

- Marmi Bianco porcelain tiles to the floors, skirting and shower walls
- Tadelakt to remaining walls
- Bespoke doors in Tabu Veneer
- Bespoke Joinery in Acer Saccharum Sycamore with polished chrome metalwork and leather features
- Sanitaryware by Villeroy & Boch, Dornbracht and The Watermark Collection

THIRD FLOOR

STAIR HALL

- Gold marmorino plaster finish to lift shaft
- Specialist plaster finish to walls by DKT Artworks
- Volakas stone to floors with antique brass detailing
- Glass balustrade with antique brass handrail
- Antique brass effect to lift doors

HALL

- Bespoke doors in Figured Eucalyptus veneer
- Volakas stone to floors with antique brass detailing
- Polished plaster finish to walls

PRINCIPAL HALLWAY

- Brushed oak timber floor with antique brass metal trims
- Wallcoverings by Altfield
- Recessed niches with ribbed feature panels
- Bespoke door with fluted detail in Figured Eucalyptus veneer

PRINCIPAL BEDROOM

- Altfield wallcoverings
- Elegant tip shear carpets with brushed oak timber boarder and antique brass metal trims
- Bespoke fitted headboard wall with leather, antique brass and fabric detailing
- Leather detailing to coffered ceiling
- Spectacular central chandelier with antique brass frame and handblown glass shades
- Bespoke doors in Figured Eucalyptus with feature ribbed glass panels to dressing room and hallway
- Feature TV wall with concealed 85” TV behind bespoke mechanical sliding ribbed doors

- Feature wallpaper to TV wall by Omexco
- Electric sheer curtains and blackout curtains

PRINCIPAL EN-SUITE

- Bespoke metal framed mirrored doors to dressing room
- Taj Mahal marble to walls and floor
- Exquisite feature wall in a stucco finish with gilded and metal leaf design by DKT Artworks
- Vanity unit finished in Taj Mahal stone with Fameed Khalique decorative panels
- Sanitaryware by Toto, Lalique, THG, Ashton & Bentley
- Coffered ceiling detail in faux suede by Fameed Khalique

PRINCIPAL DRESSING ROOM

- Bespoke doors in Figured Eucalyptus with feature ribbed glass panels to bedroom
- Metal framed mirrored doors to en-suite
- Elegant tip shear carpet with brushed oak timber boarder and antique brass trims
- Hand-gilded leaf design to coffer ceiling with leather detailing by DKT Artworks
- Custom-made wardrobes finished in Figured Eucalyptus veneer, leather detailing and solid brass feature handles by Pullcast

TERRACE

- Fluted timber decking
- Feature lighting

LOWER GROUND FLOOR

STAIR HALL

- Volakas marble to floor with the stairs transitioning into Agora Beige leading down to the Basement
- Gold marmorino plaster finish to liftshaft
- Antique brass effect to lift doors
- Bespoke doors and architraves in Tabu veneer

LAUNDRY

- Bespoke doors in Tabu Veneer
- Cashmire tile floor by Minoli
- Built in units housing Miele washing machine and tumble dryer with additional space for storage
- Facilities available to add in additional machines

STORAGE

- Cashmire tile floor by Minoli
- Bespoke doors in Tabu Veneer

LEISURE FLOOR

STAIR HALL

- Agora beige marble to staircase and floor
- Gold marmarino plaster finish to lift shaft
- Antique brass effect to lift doors
- Bespoke doors in Caleidolegno Mundy veneer with antique brass ironmongery
- Glazed screen overlooking the Pool area
- Electronic Crittall style glazed door to the Pool with mechanical lock

CINEMA ROOM

- Textured plaster to ceiling
- Specialist acoustic wall panelling in Camira fabric
- Specialist wall coverings from Élitis to cinema lobby
- Bespoke Joinery in Acer Saccharum Sycamore Veneer
- Bespoke doors in leather finish with metal detailing
- Brushed Oak timber floor with tip shear carpet and
- State-of-the-art projector and screen with surround sound

LOUNGE

- Fameed Khalique suede wall coverings to ceiling and walls
- Fine brushed European Oak timber flooring with inset bespoke art silk rug by Silk Avenue and antique brass detailing
- Bespoke banquette seating covered in Zimmer & Rohde fabric
- Central bespoke joinery unit in solid stained oak with Maple Bird’s Eye Veneer, Philip Jeffries wallpaper and bronze mirror detailing with Cosmic Black marble stone
- Bespoke joinery side units with golf leaf detailing
- Bespoke doors in Tabu veneer, leather and metal detailing
- Decorative mirrored wall elevation with inset slimline 65” LG TV
- Contemporary custom chandelier featuring rough cut selenite and antique brass frame

POWDER ROOM

- Specialist Phillip Jefferies Evergreen Alley wall covering to walls & ceiling
- Fine brushed European oak timber flooring
- Sanitary ware by Lusso Stone and The Watermark Collection

CHANGING ROOM

- Tadelakt polished plaster to walls
- Agora Beige marble to floor and skirtings with antique brass detailing
- Joinery unit in Caleidolegno Mundy veneer and inset bespoke handmade wallpaper by Fabienne Fabre
- Vanity & basin in mystery white marble with mirror and metal detailing
- Frosted glass doors to shower & WC
- Sanitaryware by The Watermark Collection
- Bespoke doors in Caleidolegno Mundy veneer with antique brass ironmongery

STEAM SHOWER

- Agora Beige marble to floor, walls and bench
- Contrasting marble to shower niche in Mystery White marble
- Frosted glass door
- Sanitaryware by The Watermark Collection

WC

- Agora Beige marble to floor & skirting
- Agora Beige marble to door linings
- Tadelakt polished plaster to walls
- Mystery White marble to niche
- Frosted glass door
- Sanitaryware from Toto and The Watermark Collection

SWIMMING POOL

- 13-meter swimming pool
- Agora Beige marble to walls and floor
- Bespoke handmade Jesmonite panels to pool feature wall and jacuzzi
- Metal Esmarelda mosaic tiles to the pool and Jacuzzi
- Custom made wet bar joinery in Caleidolegno Mundy veneer and Snow polished marble

LIFT CAR

- Specialist Arte wallpaper to walls and ceiling
- Mirror panels to walls
- Volakas marble floor with metal trim detail
- Inco Champagne Satin metalwork finish

ELECTRICAL & MECHANICAL

- 6-person passenger lift
- Crestron home automation system with full intercom facilities
- Crestron control panels throughout, centralising ambient and entertainment controls
- Efficient air-conditioning and underfloor heating
- Multi-room audio system
- Electric Car Charging point
- Fibre broadband system

SECURITY

- Monitored alarm system
- Hi-tech motion sensor security system with window and door contact sensors
- Secure door entry system
- External CCTV surveillance and remote CCTV access
- Panic alarm
- Mains supply smoke and heat detectors

MISCELLANEOUS

- Car parking space in Pont Street Mews
- Bespoke window treatments in a variety of luxury fabrics
- Bespoke feature lighting throughout the property
- Additional TV provisions have been allowed for in secondary bedrooms

APARTMENT 2

APARTMENT SUMMARY

- Duplex apartment
- 3-bedroom suites
- Private entrance on Pont Street
- Exceptional architectural features including ceiling heights of up to 3.3m

GROUND FLOOR

ENTRANCE HALL

- Striking Volakas marble floor with contrast For Di Bosco marble boarder and antique brass trims
- Bespoke doors in Caleidolegno Mundy veneer with antique brass ironmongery
- Polished plaster to walls
- Hand crafted pendant light featuring textured metal frame with leather clad details and frosted glass lampshades

CLOAKROOM

- Custom-built joinery in Caleidolegno Mundy veneer with Rubelli wardrobe door inserts
- Phillip Jefferies wall coverings
- Fior Di Bosco polished stone floor
- Bespoke doors in Caleidolegno Mundy veneer with antique brass ironmongery

POWDER ROOM

- Sanitaryware by TOTO and THG
- Bespoke Volakas polished stone vanity with antique brass detailing

- Striking Volakas marble to floor and half height panelling with dado and architrave accented by antique brass trims
- Polished plaster ceiling and Interstellar Carlucci wall coverings
- Bespoke doors in Caleidolegno Mundy veneer with antique brass ironmongery

RECEPTION & DINING ROOM

- Exceptional room proportions with ceiling heights of circa 3.5m
- Brushed oak chevron floor with antique brass metal detail and stone border in Fior Di Bosco
- Decorative painted half height raised & fielded panelling to walls with Japanese Silky Strings wall coverings by Phillip Jefferies above.
- Full height stone clad feature wall in Fior Di Bosco with bespoke linear fireplace and inset Mirror TV
- Custom made joinery in stained oak veneer with solid oak-stained feature ribbed panels and antique brass trim detail
- Grand Crittall style glazed double doors by Art Steel
- Contemporary bespoke doors in bronze tinted mirror and antique brass trim detail
- Hand crafted, tiered, leather and antique brass chandelier with tinted blown molten glass and gold leaf shades

KITCHEN

- Custom-made kitchen units by Doig, in Caleidolegno Mundy veneer and solid oak internals with brass detailing
- Mystic Grey marble worktop and splashback
- Miele appliances, including an oven, combi microwave oven, induction hob, fridge, freezer, and dishwasher
- Quooker boiling water tap
- Built-in banquette seating with a Mystic Grey marble base and antique brass details
- Mystic Grey marble to floor
- Bespoke doors in Caleidolegno Mundy veneer with antique brass ironmongery
- Custom made, antique brass pendant light with milky glass shades

PRINCIPAL BEDROOM

- Bespoke fitted headboard in luxurious fabrics by James Hare & Weitzner, antique mirror and leather details
- Foglie D’oro brushed oak timber floor with inset tip shear carpet and antique brass metal trims
- Omexco wallcoverings
- Bespoke lacquered doors

PRINCIPAL DRESSING ROOM

- Bespoke wardrobes finished in Figured Eucalyptus with leather detail
- Foglie D’Oro timber floor with inset tip shear carpet and antique brass metal trims
- Bespoke doors in Caleidolegno Mundy veneer with antique brass ironmongery
- Omexco wallcoverings

PRINCIPAL BATHROOM

- Bespoke vanity with Caesarstone top, Lusso Stone basin and lacquered ribbed panel doors
- Sanitaryware by TOTO and Dornbracht
- Exquisite feature shower wall in book matched Bianco Elegante porcelain
- Bianco Elegante porcelain tile to walls & floor
- Bespoke lacquered doors

LOWER GROUND FLOOR

BEDROOM 2

- Stereo linen Wallcoverings
- Foglie D'oro brushed oak timber floor with inset tip shear carpet
- Bespoke lacquered doors

DRESSING ROOM 2

- Bespoke wardrobes in Tabu Veneer with antique brass handles
- Stereo linen Wallcoverings
- Foglie D'Oro brushed oak timber floor
- Bespoke doors in Caleidolegno Mundy veneer with antique brass ironmongery

ENSUITE 2

- Bespoke vanity in Velvet Taupe porcelain
- Sanitaryware by Villeroy & Boch, Dornbracht and Kaldewei
- Ceasarstone to niche and bath top
- Ars Beige Porcelanosa to walls and floor with Velvet Taupe contrast band to vanity wall
- Bespoke lacquered doors

BEDROOM 3

- Phillip Jeffries plastered stucco wall covering
- Bespoke Wardrobes in Tabu Veneer, with Philip Jeffries feature panels
- Elegant tip shear carpet

ENSUITE 3

- Thassos porcelain to floor and walls
- Bespoke vanity and shower feature wall in Bianco Pentelico porcelain
- Sanitaryware by Villeroy & Boch and Dornbracht
- Ceasarstone stone shower bench and niche detail
- Bespoke lacquered doors

UTILITY

- Marvel Crema Delicato tile floor by Minoli
- Built in units for Miele washing machine and tumble dryer with additional storage

ELECTRICAL & MECHANICAL

- Crestron home automation system with full intercom facilities
- Crestron control panels throughout, centralising ambient and entertainment controls
- Efficient air-conditioning and underfloor heating
- Multi-room audio system
- Fibre broadband system

SECURITY

- Monitored alarm system with hi-tech motion sensors and window and door contact sensors
- Secure door entry system
- External CCTV surveillance and remote CCTV access
- Panic alarm
- Mains supply smoke and heat detectors

MISCELLANEOUS

- Bespoke feature lighting throughout the property
- Additional TV provisions have been allowed for in secondary bedrooms
- Bespoke window treatments in a variety of luxury fabrics

APARTMENT 3

LOWER GROUND FLOOR

KITCHEN/DINING/RECEPTION

- Timber floor with inset tip shear carpet
- Kreider kitchen with Quartz Worktop
- Built in appliances including Miele fridge, induction hob, oven and dishwasher and Quooker boiling water tap

PRINCIPAL BEDROOM

- Elegant tip shear carpet
- Custom built-in wardrobes

MASTER EN-SUITE

- Minoli tile to floor and walls
- Sanitary ware by Duravit and Crosswater

BEDROOM 2

- Elegant tip shear carpet
- Custom built-in wardrobes

BATHROOM

- Minoli Evolution Marvel tile to floor and walls
- Sanitaryware by Duravit, Dornbracht and Crosswater

UTILITY

- Built in units housing Miele washing machine and tumble dryer with additional storage

MECHANICAL, ELECTRICAL AND SECURITY

- Lutron lighting control system
- Air Conditioning
- Underfloor heating
- Monitored alarm system
- Hi-tech motion sensor security system with window and door contact sensors
- Secure door entry system
- External CCTV surveillance and remote CCTV access
- Panic alarm
- Mains supply smoke and heat detector

APARTMENT 4

FOURTH FLOOR

- Central ceiling height of circa 5m
- Services in place ready for final connection, including air conditioning.

THE LOCATION



Situated on the corner of Pont Street and Walton Street in the heart of Knightsbridge, this development offers an unmatched London lifestyle.

Surrounded by luxury boutiques, world-class dining, and iconic landmarks such as Harrods and Sloane Square, this prime address marries the historic charm of the local streetscape with the vibrancy of modern city living. With Hyde Park just moments away and excellent transport links, Walton House combines convenience with exclusivity in one of London's most sought-after locations.





Renowned for creating exceptional, award-winning, residences around the world, Mdesign London blends boundless creativity with a refined and meticulous approach.

By innovating at the intersection of architecture, art, and design, Mdesign London ensures that every residence is a masterpiece, uniquely envisioned and expertly brought to life from concept to completion.

Walton House Residences embodies our on-going commitment to pushing the boundaries of design, resulting in a collection of homes that are the epitome of modern, luxury living.

CONTACT

sales@mdesignlondon.com
[+44 \(0\) 20 7258 8500](tel:+442072588500)
www.mdesignlondon.com